

**ITEM 35. TRAFFIC TREATMENT – RAISED THRESHOLD – GOLDEN GROVE  
STREET DARLINGTON**

**TRIM RECORD NO: 2016/258886**

**RECOMMENDATION**

It is recommended that the Committee endorse the introduction of a raised threshold in Golden Grove Street, Darlington, 55 metres north of Abercrombie Street.

**VOTING MEMBERS FOR THIS ITEM**

<b><i>Voting Members</i></b>	<b><i>Support</i></b>	<b><i>Object</i></b>
City of Sydney		
Roads and Maritime Services		
NSW Police – Newtown LAC		
Representative for the Member for Newtown		

**DECISION**

**BACKGROUND**

The City has received a request from the Darlington Public School to provide a raise threshold in Golden Grove Street, Darlington adjacent to the school to reduce the speed of traffic.

**COMMENTS**

Golden Grove Street runs between Darlington Road and Wilson Street and is signposted as a 40km/h School Zone. It is a major walking route for students at Darlington Public School, students from the University of Sydney and nearby residents.

The proposed raised threshold would slow down traffic and create a more pedestrian friendly street. The threshold will be consistent in design with the traffic calming devices already in place on Abercrombie Street.

The proposal aims to ensure road users maintain the 40km/h per hour speed limit adjacent to the school zone. This proposal would help maintain general safety in the area and is part of the City's commitment to calm traffic and improve residential amenity.

No parking spaces will be lost as part of this proposal.

**CONSULTATION**

The City consulted local residents and businesses in the area. There were 128 letters sent out with no response supporting or opposing the proposal.

**FINANCIAL**

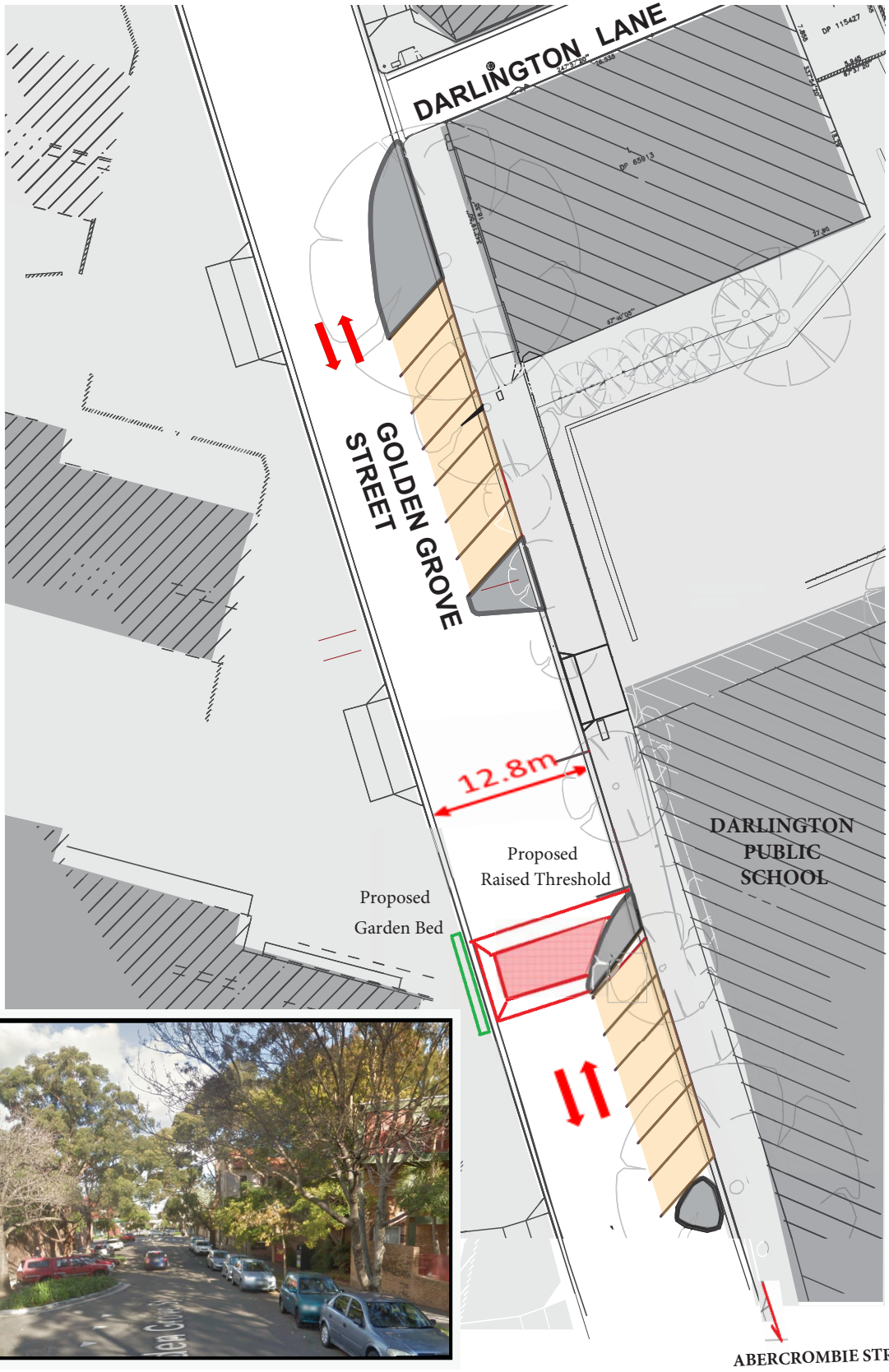
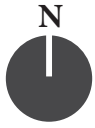
Funds are available within the City Access Budget 2015/16 Connecting Schools Program.

**ATTACHMENTS**

Traffic Treatment – Raised Threshold– Golden Grove Street Darlington

Peter Wright, Road Safety officer

Joseph Gomes, Area Design Engineer



PROPOSAL

GOLDEN GROVE STREET, DARLINGTON  
RAISED THRESHOLD

